

Cranio Maxillofacial Implants Product Catalogue



NewLife Surgical Works

An ISO 9001 : 2008 & CE Certified Company



Mfg. Of : Maxillofacial Implants & instruments
Orthopedic Implants & instruments





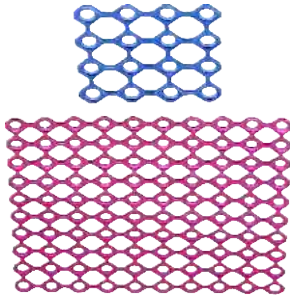
MINI BONE PLATE WITH GAP

- Product Code** : 1.5mm : TB01.02 To TB01.06
2.0mm : TC01.02 To TC01.06
2.5mm : TD01.02 To TD01.06
- Screw** : 1.5mm, 2.0mm, 2.5mm
- Material** : Stainless Steel 316L, Titanium (Grade II)
- Thickness** : 1.5mm:-0.8mm, 2.0mm:-1.0mm, 2.5mm:-1.2mm
- Holes** : 2, 3, 4, 5, 6



MANDIBLE WIRE MESH (STRAIGHT)

- Product Code** : 1.5mm: TB19.22 To TB19.46
2.0mm: TC27.22 To TC27.46
- Screw** : 1.5mm, 2.0mm
- Material** : Titanium (Grade II)
- Thickness** : 1.5mm:- 0.5mm, 2.0mm:- 0.6mm
- Holes** : 2x2, 2x3, 3x3, 4x4, 4x6



MINI BONE PLATE " Y " SHAPE

- Product Code** : 1.5mm : TB12.22, TB12.23
2.0mm : TC12.22, TC12.23
2.5mm : TD12.22, TD12.23
- Screw** : 1.5mm, 2.0mm, 2.5mm
- Material** : Stainless Steel 316L, Titanium (Grade II)
- Thickness** : 1.5mm:-0.8mm, 2.0mm:-1.0mm, 2.5mm:-1.2mm
- Holes** : 2 X 2, 2 X 3



MINI BONE PLATE " H " SHAPE

- Product Code** : 1.5mm : TB14.33, TB14.44
2.0mm : TC14.33, TC14.44
2.5mm : TD14.33, TD14.44
- Screw** : 1.5mm, 2.0mm, 2.5mm
- Material** : Stainless Steel 316L, Titanium (Grade II)
- Thickness** : 1.5mm:-0.8mm, 2.0mm:-1.0mm, 2.5mm:-1.2mm
- Holes** : 3 X 3, 4 X 4





MINI BONE PLATE " X " SHAPE

- Product Code** : 1.5mm : TB11.05
2.0mm : TC11.05
2.5mm : TD11.05
- Screw** : 1.5mm, 2.0mm, 2.5mm
- Material** : Stainless Steel 316L, Titanium (Grade II)
- Thickness** : 1.5mm:-0.8mm, 2.0mm:-1.0mm, 2.5mm:-1.2mm
- Holes** : 5 Hole



NOSE PLATE " Y " SHAPE



- Product Code** : Tc24
- Screw** : 2.0mm
- Material** : Titanium (Grade II)
- Thickness** : 1.0mm Thickness
- Holes** : 10 Hole

NOSE PLATE " H " SHAPE

- Product Code** : Tc23
- Screw** : 2.0mm
- Material** : Titanium (Grade II)
- Thickness** : 1.0mm Thickness
- Holes** : 12 Hole



TRAPEZOID CONDYLE PLATE (TCP)



- Product Code** : Tc25
- Screw** : 2.0mm
- Material** : Titanium (Grade II)
- Thickness** : 1.0mm Thickness
- Holes** : 4 Hole



NewLife Surgical Works

An ISO 9001 : 2008 & CE Certified Company

3 DIMENSIONAL BONE PLATE (3D) SQUARE SHAPE

- Product Code** : 1.5mm: TB26.04, TB26.06, TB26.08
2.0mm: TC36.04, TC36.06, TC36.08
2.5mm: TD21.04, TD21.06, TD21.08
- Screw** : 1.5mm, 2.0mm, 2.5mm
- Material** : Stainless Steel 316L, Titanium (Grade II)
- Thickness** : 1.5mm:-0.8mm, 2.0mm:-1.0mm, 2.5mm:-1.2mm
- Holes** : 4 Hole, 6 Hole, 8 Hole



DELTA PLATE



- Product Code** : Tc20
- Screw** : 2.0mm
- Material** : Titanium (Grade II)
- Thickness** : 1.0mm Thickness
- Holes** : 4 Hole

MICRO BURR HOLE COVER PLATE

- Product Code** : 1.5mm: TB27, 2.0mm: TC26
- Screw** : 1.5mm, 2.0mm
- Material** : Titanium (Grade II)
- Thickness** : 1.5mm: 0.8mm, 2.0mm: 1.0mm Thickness
- Holes** : 5 Hole



3 DIMENSIONAL BONE PLATE (3D) RECTANGULAR SHAPE



- Product Code** : 1.5mm: TB28.04, TB28.06, TB28.08
2.0mm: TC18.04, TC18.06, TC18.08
2.5mm: TD22.04, TD22.06, TD22.08
- Screw** : 1.5mm, 2.0mm, 2.5mm
- Material** : Stainless Steel 316L, Titanium (Grade II)
- Thickness** : 1.5mm:-0.8mm, 2.0mm:-1.0mm, 2.5mm:-1.2mm
- Holes** : 4 Hole, 6 Hole, 8 Hole



MINI CURVED PLATE (LEFT & RIGHT)

Product Code : 2.0mm: TC16.04, TC16.06
2.5mm: TD23.04, TD23.06

Screw : 2.0mm, 2.5mm

Material : Stainless Steel 316L, Titanium (Grade II)

Thickness : 2.0mm:-1.0mm, 2.5mm:-1.2mm

Holes : 4 Hole, 6 Hole



TWISTED PLATE (LEFT & RIGHT)

Product Code : Tc17

Screw : 2.0mm

Material : Titanium (Grade II)

Thickness : 1.0mm Thickness

Holes : 5 Hole



MINI " L " SHAPE PLATE 120' WITH GAP (LEFT & RIGHT)

Product Code : 1.5mm: TB07.22 To TB07.33
2.0mm: TC07.22 To TC07.33
2.5mm: TD07.22 To TD07.33

Screw : 1.5mm, 2.0mm, 2.5mm

Material : Stainless Steel 316L, Titanium (Grade II)

Thickness : 1.5mm:-0.8mm, 2.0mm:-1.0mm, 2.5mm:-1.2mm

Holes : 2x2, 2x3, 3x2, 3x3



MINI " L " SHAPE PLATE 90' WITH GAP (LEFT & RIGHT)

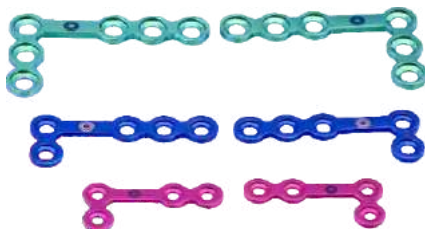
Product Code : 1.5mm: TB05.22 To TB05.33
2.0mm: TC05.22 To TC05.33
2.5mm: TD05.22 To TD05.33

Screw : 1.5mm, 2.0mm, 2.5mm

Material : Stainless Steel 316L, Titanium (Grade II)

Thickness : 1.5mm:-0.8mm, 2.0mm:-1.0mm, 2.5mm:-1.2mm

Holes : 2x2, 2x3, 3x2, 3x3





NewLife Surgical Works

An ISO 9001 : 2008 & CE Certified Company

CHIN PLATE

Product Code : TC19.22, TC19.32

Screw : 2.0mm

Material : Titanium (Grade II)

Thickness : 1.0mm Thickness

Holes : 2x2, 3x2 (10mm Bar), 2x2, 3x2 (12mm Bar)



ARCH BAR (PACKET)



Product Code : W04

Screw : -----

Material : Stainless Steel 316L, Titanium (Grade II)

Thickness : -----

Holes : 300 cm

MINI ORBITAL PLATE CONTINUOUS HOLE

Product Code : 1.5mm : TB04.04 To TB04.20
2.0mm : TC04.04 To TC04.20
2.5mm : TD04.04 To TD04.20

Screw : 1.5mm, 2.0mm, 2.5mm

Material : Stainless Steel 316L, Titanium (Grade II)

Thickness : 1.5mm:-0.8mm, 2.0mm:-1.0mm, 2.5mm:-1.2mm

Holes : 4, 6, 8, 12, 16, 20



WIRE REEL



Product Code : W05

Screw : 1.5mm, 2.0mm, 2.5mm

Dia. : 16 To 30 SWG (Diff. 2)

Length : 500mm to 6000mm
(Diff. 20mm or 50mm)



MINI BONE PLATE CONTINUOUS HOLE

- Product Code** : 1.5mm : TB02.02 To TB02.50
2.0mm : TC02.02 To TC02.50
2.5mm : TD02.02 To TD02.50
- Screw** : 1.5mm, 2.0mm, 2.5mm
- Material** : Stainless Steel 316L, Titanium (Grade II)
- Thickness** : 1.5mm:-0.8mm, 2.0mm:-1.0mm, 2.5mm:-1.2mm
- Holes** : 2, 3, 4, 5, 6, 8, 10, 12, 16, 20, 30, 50



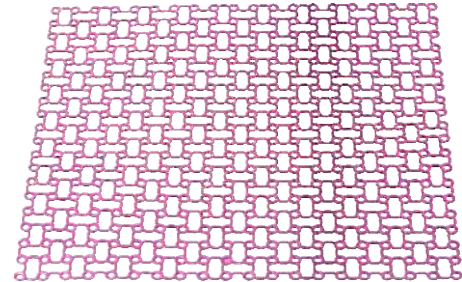
2.7MM TMJ CONDYLE WITH RECONSTRUCTION PLATE (LEFT & RIGHT)



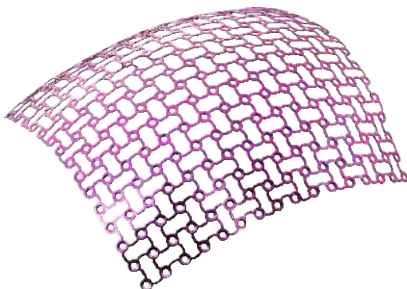
- Product Code** : TE05.410 To TE05.424
- Screw** : 2.5mm
- Material** : Stainless Steel 316L, Titanium (Grade II)
- Thickness** : 2.0mm & 2.5mm
- Holes** : 4x10, 4x16, 4x20, 4x24

EAZY MESH (Straight)

- Product Code** : 1.5mm: TB21.22 To TB21.46
2.0mm: TC29.22 To TC29.46
- Screw** : 1.5mm, 2.0mm,
- Material** : Titanium (Grade II)
- Thickness** : 0.5mm, 0.6mm, 0.8mm
- Holes** : 2x2, 2x3, 3x3, 4x4, 4x6



EAZY MESH (Pre band)



- Product Code** : 1.5mm: TB22.22 To TB22.46
2.0mm: TC30.22 To TC30.46
- Screw** : 1.5mm, 2.0mm,
- Material** : Titanium (Grade II)
- Thickness** : 0.5mm, 0.6mm, 0.8mm
- Holes** : 2x2, 2x3, 3x3, 4x4, 4x6



NewLife Surgical Works

An ISO 9001 : 2008 & CE Certified Company

MINI SCREW SINGLE SLOT

- Product Code** : 1.5mm : TA01.04 To TA01.12
 2.0mm : TA02.04 To TA02.16
 2.5mm : TA03.06 To TA03.18
- Material** : Stainless Steel 316L, Titanium (Grade 5)
- Size** : 1.5mm : 4mm To 12mm
 2.0mm : 4mm To 16mm
 2.5mm : 6mm To 18mm



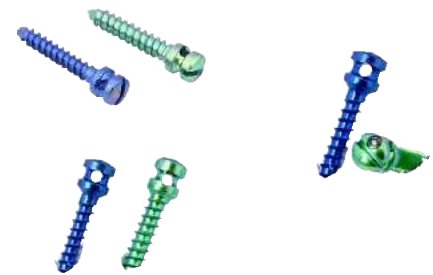
MINI SCREW CROSS SLOT

- Product Code** : 1.5mm : TA04.04 To TA04.12
 2.0mm : TA05.04 To TA05.16
 2.5mm : TA06.06 To TA06.18
- Material** : Stainless Steel 316L, Titanium (Grade 5)
- Size** : 1.5mm : 4mm To 12mm
 2.0mm : 4mm To 16mm
 2.5mm : 6mm To 18mm



INTERMAXILLARY FIXATION SCREWS (IMF) WITH GROVE & HOLE

- Product Code** : 2.0mm : TA12.04 To TA12.12
 2.5mm : TA13.06 To TA13.14
- Material** : Stainless Steel 316L, Titanium (Grade 5)
- Size** : 2.0mm : 4mm To 12mm (Diff. 2mm)
 2.5mm : 6mm To 14mm (Diff. 2mm)



MINI BONE PLATE " I " SHAPE



- Product Code** : 1.5mm : Tb10
 2.0mm : Tc10
 2.5mm : TD10
- Screw** : 1.5mm, 2.0mm, 2.5mm
- Material** : Stainless Steel 316L, Titanium (Grade II)
- Thickness** : 1.5mm:-0.8mm, 2.0mm:-1.0mm, 2.5mm:-1.2mm
- Holes** : 6 Hole



MINI " T " SHAPE PLATE WITH GAP

- Product Code** : 1.5mm: TB08.22 To TB08.33
2.0mm: TC08.22 To TC08.33
2.5mm: TD08.22 To TD08.33
- Screw** : 1.5mm, 2.0mm, 2.5mm
- Material** : Stainless Steel 316L, Titanium (Grade II)
- Thickness** : 1.5mm:-0.8mm, 2.0mm:-1.0mm, 2.5mm:-1.2mm
- Holes** : 2x2, 2x3, 3x2, 3x3



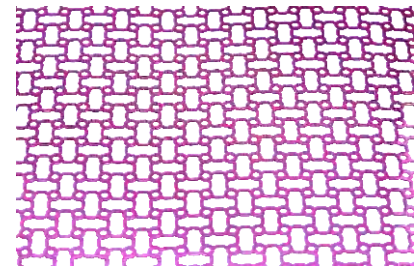
MINI BONE PLATE DOUBLE " Y " SHAPE



- Product Code** : 1.5mm : Tb13
2.0mm : Tc13
2.5mm : Td13
- Screw** : 1.5mm, 2.0mm, 2.5mm
- Material** : Stainless Steel 316L, Titanium (Grade II)
- Thickness** : 1.5mm:-0.8mm, 2.0mm:-1.0mm, 2.5mm:-1.2mm
- Holes** : 6 Hole

MINI ORBITAL PLATE WITH GAP

- Product Code** : 1.5mm : TB03.04, TB03.06
2.0mm : TC03.04, TC03.06
2.5mm : TD03.04, TD03.06
- Screw** : 1.5mm, 2.0mm, 2.5mm
- Material** : Stainless Steel 316L, Titanium (Grade II)
- Thickness** : 1.5mm:-0.8mm, 2.0mm:-1.0mm, 2.5mm:-1.2mm
- Holes** : 4 Hole, 6 Hole



- Product Code** : ????
- Screw** : ???
- Material** : ???
- Thickness** : ??
- Holes** : ??



???

Product Code : ???

Screw : ??

Material : ???

Thickness : ????

Holes : ?????



?????

Product Code : ????

Screw : ???

Material : ???

Thickness : ????

Holes : ????



???

Product Code : ???

Screw : ??

Material : ???

Thickness : ????

Holes : ?????



?????

Product Code : ????

Screw : ???

Material : ???

Thickness : ????

Holes : ????





???

Product Code : ???

Screw : ??

Material : ???

Thickness : ????

Holes : ??????



?????

Product Code : ????

Screw : ???

Material : ???

Thickness : ????

Holes : ????



???

Product Code : ???

Screw : ??

Material : ???

Thickness : ????

Holes : ??????



?????

Product Code : ????

Screw : ???

Material : ???

Thickness : ????

Holes : ????





???

Product Code : ???

Screw : ??

Material : ???

Thickness : ????

Holes : ?????



?????



Product Code : ????

Screw : ???

Material : ???

Thickness : ????

Holes : ????

???

Product Code : ???

Screw : ??

Material : ???

Thickness : ????

Holes : ?????



?????



Product Code : ????

Screw : ???

Material : ???

Thickness : ????

Holes : ????



???

Product Code : ???

Screw : ??

Material : ???

Thickness : ????

Holes : ??????



?????

Product Code : ????

Screw : ???

Material : ???

Thickness : ????

Holes : ????



???

Product Code : ???

Screw : ??

Material : ???

Thickness : ????

Holes : ??????



?????

Product Code : ????

Screw : ???

Material : ???

Thickness : ????

Holes : ????





???

Product Code : ???

Screw : ??

Material : ???

Thickness : ????

Holes : ??????



?????

Product Code : ????

Screw : ???

Material : ???

Thickness : ????

Holes : ????



???

Product Code : ???

Screw : ??

Material : ???

Thickness : ????

Holes : ??????



?????

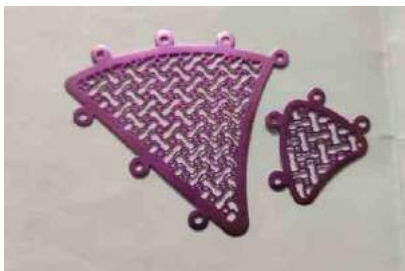
Product Code : ????

Screw : ???

Material : ???

Thickness : ????

Holes : ????





NewLife Surgical Works

An ISO 9001 : 2008 & CE Certified Company

???

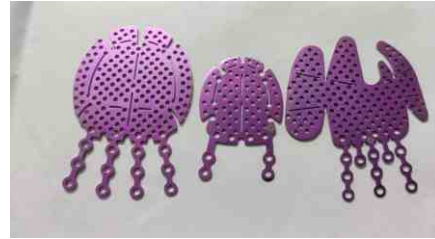
Product Code : ???

Screw : ??

Material : ????

Thickness : ????

Holes : ??????



NewLife Surgical Works

An ISO 9001 : 2008 & CE Certified Company

Product Code : ????

Screw : ???

Material : ???

Thickness : ????

Holes : ????



NewLife Surgical Works

An ISO 9001 : 2008 & CE Certified Company

Product Code : ???

Screw : ??

Material : ????

Thickness : ????

Holes : ??????



NewLife Surgical Works

An ISO 9001 : 2008 & CE Certified Company

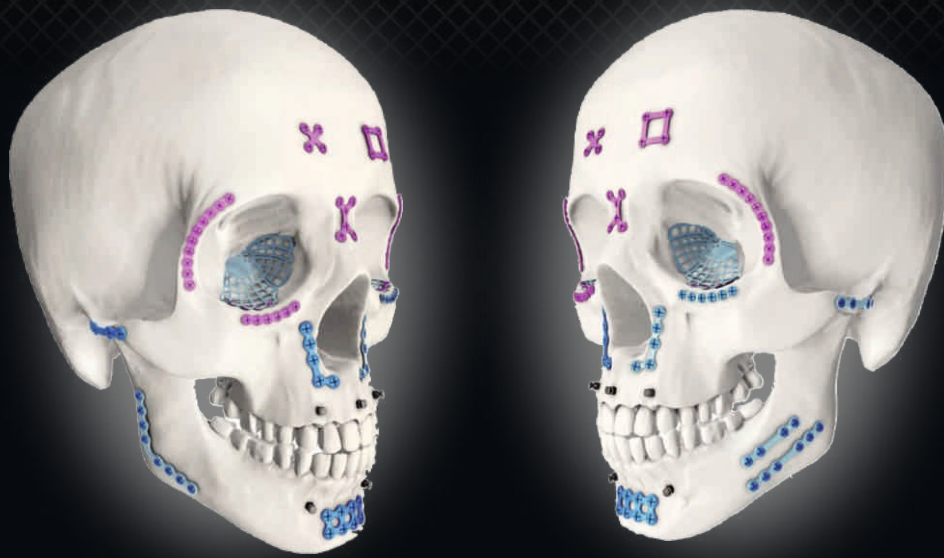
Product Code : ????

Screw : ???

Material : ???

Thickness : ????

Holes : ????



NewLife Surgical Works

An ISO 9001 : 2008 & CE Certified Company



CE 1612